



2017-2018

Selected Products



Contents

Commercial Lighting

Downlight

Calen - 4", 6", 8" / Round / Recessed

Kalen - 4", 6", 8" / Square / Recessed

Cavin - 5", 6", 8" / Round / Surface-mounted

Kavin - 5", 6", 8" / Square / Surface-mounted

Tracklight

Thousand - Φ 50 / 15W / 15°- 60°

William - Φ 100 / 20W / 24°

Wyatt - Φ 100 / 25W / 10°, 24°, 36°

Theo - 115*110 / 20W / 90°

Thorn - 115*110 / 20W / 15°, 24°

Stanley - Φ 130 / 30W / 10°, 24°, 36°

Rico - Φ 100 / 25W / 15°, 24°

Don - Φ 100 / 25W / 24°

Davis - Φ 100 / 30W / 24°, 36°

Projector - Φ 100 / 25W / 15°

Camera - Φ 100 / 30W / 24°, 36°

Industrial Lighting

Highbay

Kong - 150W / 60°, 90°, 120° / 8-15m

Darson - 100W, 150W, 200W / 60°, 90°, 120° / 8-15m

Accessories

Track system

Track D - Surface-mounted / Tri-circuit / 1m, 2m, 3m

Track R - Recessed / Tri-circuit / 1m, 2m, 3m

Power Supply & Connectors

Smart Hanging Kit for Track D

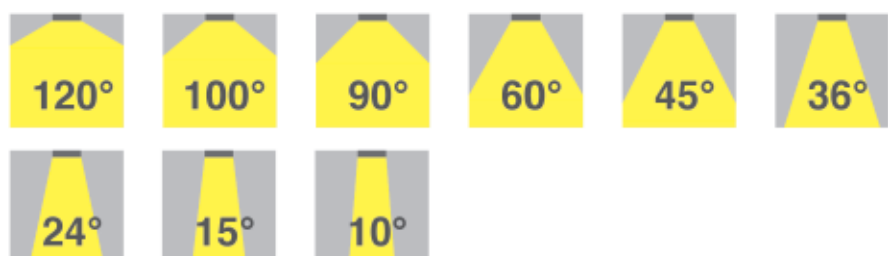
Dimmer

Universal Dimmer - 3~200W / 1%~95%

Annotations



Illustrate available colour temperature options.



Illustrate available beam angle options.



Illustrate available colour options.



Illustrate colour enhancement option available.

The background of the page is a photograph of a tree trunk with rough, textured bark. A wooden ladder is leaning against the tree, extending from the bottom right towards the top right. The lighting is soft, creating a warm, natural atmosphere. The text 'DOWNLIGHT' is centered on the left side of the page.

DOWNLIGHT



Calen & Kalen

Side-lit Recessed Downlight Series

A Series

- > 90lm/w@3000K
- > Flicker free
- > DC-DC
- > PF>0.95
- > 50,000hours

C Series

- > 80lm/w@3000K
- > DC-DC
- > PF>0.90
- > 30,000hours



Calen 4"



Size
Φ120mm

Cut-out
Φ105mm - 115mm

Colour
White

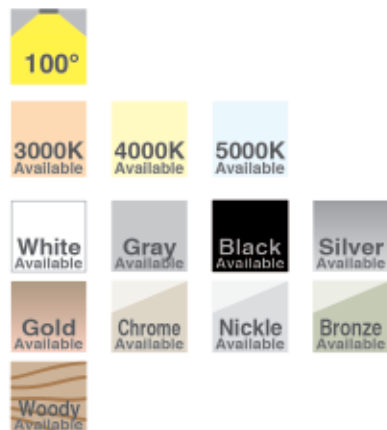
Weight
157.5g

Mounting
Ceiling recessed

Ingress protection rating
IP20

Product description

4" recessed direct emission luminaire designed to be installed in Φ105mm-115mm ceiling cut-outs.



Technical data

Min Luminous Flux	900lm@3000K
-------------------	-------------

Power Consumption	10W
-------------------	-----

Luminaire Efficacy	>90lm/w
--------------------	---------

Input Voltage	200-240V
---------------	----------

Power Factor	0.95
--------------	------

Ra	80
----	----

Colour Deviation	<6 steps
------------------	----------

Dimming Option	N/A
----------------	-----

Dimming Range	N/A
---------------	-----

Life Span	50,000hours
-----------	-------------

Ambient Temperature	-20°C~40°C
---------------------	------------

LED package
SMD2835

LED brand
Sinotron

Driver efficiency
85%

Driver brand
LiFud

Calen 6"



Product description

6" recessed direct emission luminaire designed to be installed in Φ 155mm-165mm ceiling cut-outs.

Size
 Φ 175mm

Cut-out
 Φ 155mm - 165mm

Colour
White

Weight
299.5g

Mounting
Ceiling recessed

Ingress protection rating
IP20

Technical data

Min Luminous Flux 1620lm@3000K

Power Consumption 18W

Luminaire Efficacy >90lm/w

Input Voltage 200-240V

Power Factor 0.95

Ra 80

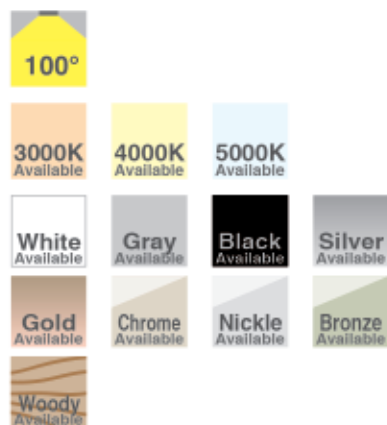
Colour Deviation <6 steps

Dimming Option N/A

Dimming Range N/A

Life Span 50,000hours

Ambient Temperature $-20^{\circ}\text{C}\sim 40^{\circ}\text{C}$



LED package
SMD2835

LED brand
Sinotron

Driver efficiency
85%

Driver brand
LiFud

Calen 8"



Product description

8" recessed direct emission luminaire designed to be installed in Φ 205mm-215mm ceiling cut-outs.

Size
 Φ 225mm

Cut-out
 Φ 205mm - 215mm

Colour
White

Weight
431.5g

Mounting
Ceiling recessed

Ingress protection rating
IP20

Technical data

Min Luminous Flux 2250lm@3000K

Power Consumption 25W

Luminaire Efficacy >90lm/w

Input Voltage 200-240V

Power Factor 0.95

Ra 80

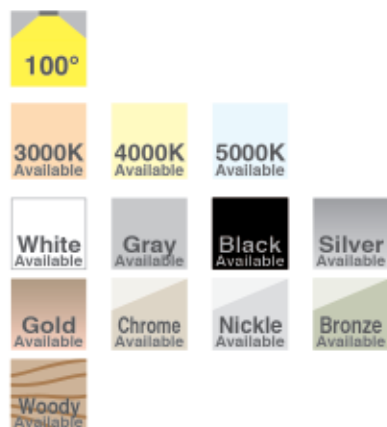
Colour Deviation <6 steps

Dimming Option N/A

Dimming Range N/A

Life Span 50,000hours

Ambient Temperature -20°C~40°C



LED package
SMD2835

LED brand
Sinotron

Driver efficiency
85%

Driver brand
LiFud

Kalen 4"



Size
120mm*120mm

Cut-out
105mm*105mm

Colour
White

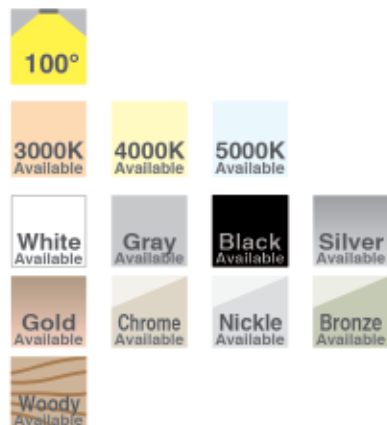
Weight
184.5g

Mounting
Ceiling recessed

Ingress protection rating
IP20

Product description

4" recessed direct emission luminaire designed to be installed in 105mm*105mm ceiling cut-outs.



Technical data

Min Luminous Flux	900lm@3000K
Power Consumption	10W
Luminaire Efficacy	>90lm/w
Input Voltage	200-240V
Power Factor	0.95
Ra	80
Colour Deviation	<6 steps
Dimming Option	N/A
Dimming Range	N/A
Life Span	50,000hours
Ambient Temperature	-20°C~40°C

LED package
SMD2835

LED brand
Sinotron

Driver efficiency
85%

Driver brand
LiFud

Kalen 6"



Size
175mm*175mm

Cut-out
155mm*155mm

Colour
White

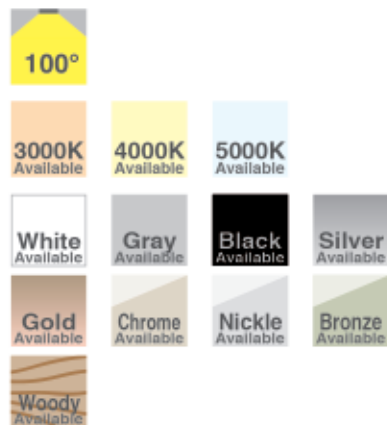
Weight
358.5g

Mounting
Ceiling recessed

Ingress protection rating
IP20

Product description

6" recessed direct emission luminaire designed to be installed in 155mm*155mm ceiling cut-outs.



Technical data

Min Luminous Flux 1620lm@3000K

Power Consumption 18W

Luminaire Efficacy >90lm/w

Input Voltage 200-240V

Power Factor 0.95

Ra 80

Colour Deviation <6 steps

Dimming Option N/A

Dimming Range N/A

Life Span 50,000hours

Ambient Temperature -20°C~40°C

LED package
SMD2835

LED brand
Sinotron

Driver efficiency
85%

Driver brand
Lifud



Kalen 8''

Size
225mm*225mm

Cut-out
205mm*205mm

Colour
White

Weight
551.5g

Mounting
Ceiling recessed

Ingress protection rating
IP20

Product description

8'' recessed direct emission luminaire designed to be installed in 205mm*205mm ceiling cut-outs.



Technical data

Min Luminous Flux 2250lm@3000K

Power Consumption 25W

Luminaire Efficacy >90lm/w

Input Voltage 200-240V

Power Factor 0.95

Ra 80

Colour Deviation <6 steps

Dimming Option N/A

Dimming Range N/A

Life Span 50,000hours

Ambient Temperature -20°C~40°C

LED package
SMD2835

LED brand
Sinotron

Driver efficiency
85%

Driver brand
Lifud

Cavin & Kavin

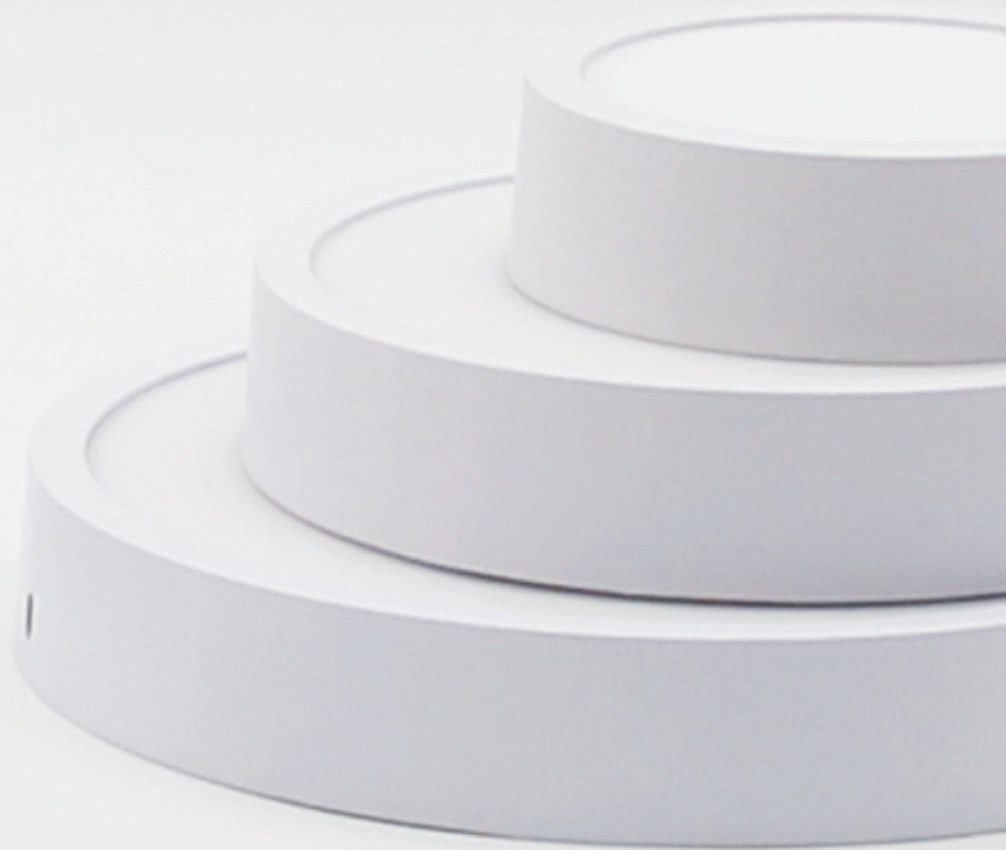
Side-lit Surface Mounted Downlight Series

A Series

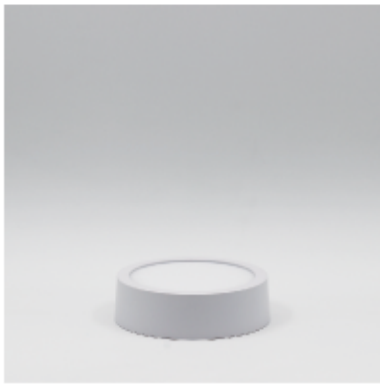
- > 90lm/w@3000K
- > Flicker free
- > DC-DC
- > PF>0.95
- > 50,000hours

C Series

- > 80lm/w@3000K
- > DC-DC
- > PF>0.90
- > 30,000hours



Cavin 5"



Product description

5" direct emission luminaire designed to be mounted on ceilings.

Size
Φ145mm*35mm

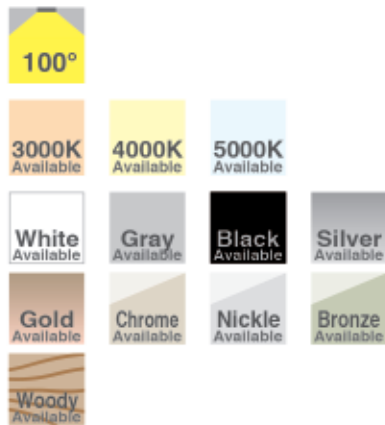
Cut-out
/

Colour
White

Weight
277.5g

Mounting
Surface mounted

Ingress protection rating
IP20



Technical data

Min Luminous Flux	1080lm@3000K
-------------------	--------------

Power Consumption	12W
-------------------	-----

Luminaire Efficacy	>90lm/w
--------------------	---------

Input Voltage	200-240V
---------------	----------

Power Factor	0.95
--------------	------

Ra	80
----	----

Colour Deviation	<6 steps
------------------	----------

Dimming Option	N/A
----------------	-----

Dimming Range	N/A
---------------	-----

Life Span	50,000hours
-----------	-------------

Ambient Temperature	-20°C~40°C
---------------------	------------

LED package
SMD2835

LED brand
Sinotron

Driver efficiency
85%

Driver brand
LiFud

Cavin 6"



Size
Φ175mm*35mm

Cut-out
/

Colour
White

Weight
373.5g

Mounting
Surface mounted

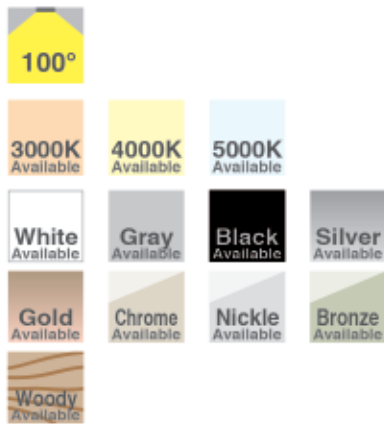
Ingress protection rating
IP20

Product description

6" direct emission luminaire designed to be mounted on ceilings.

Technical data

Min Luminous Flux	1620lm@3000K
Power Consumption	18W
Luminaire Efficacy	>90lm/w
Input Voltage	200-240V
Power Factor	0.95
Ra	80
Colour Deviation	<6 steps
Dimming Option	N/A
Dimming Range	N/A
Life Span	50,000hours
Ambient Temperature	-20°C~40°C



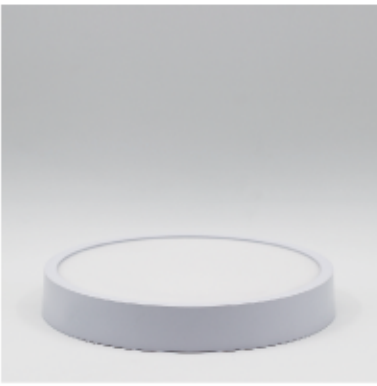
LED package
SMD2835

LED brand
Sinotron

Driver efficiency
85%

Driver brand
LiFud

Cavin 8"



Size
Φ225mm*35mm

Cut-out
/

Colour
White

Weight
526.5g

Mounting
Surface mounted

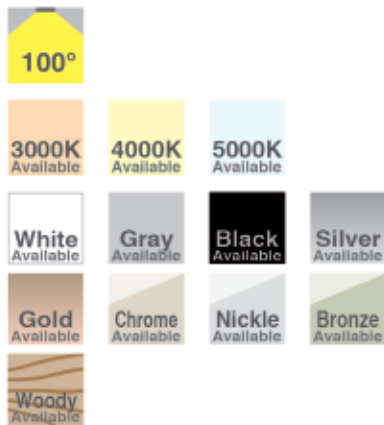
Ingress protection rating
IP20

Product description

8" direct emission luminaire designed to be mounted on ceilings.

Technical data

Min Luminous Flux	2250lm@3000K
Power Consumption	25W
Luminaire Efficacy	>90lm/w
Input Voltage	200-240V
Power Factor	0.95
Ra	80
Colour Deviation	<6 steps
Dimming Option	N/A
Dimming Range	N/A
Life Span	50,000hours
Ambient Temperature	-20°C~40°C



LED package
SMD2835

LED brand
Sinotron

Driver efficiency
85%

Driver brand
LiFud

Kavin 5"



Size
Φ145mm*145mm*35mm

Cut-out
/

Colour
White

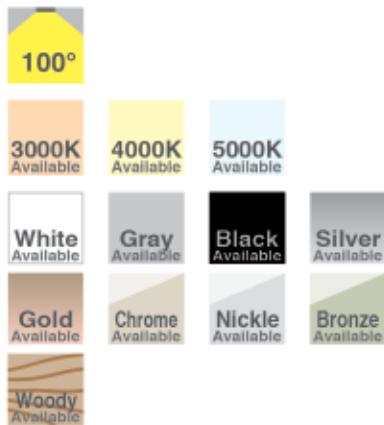
Weight
321.5g

Mounting
Surface mounted

Ingress protection rating
IP20

Product description

5" direct emission luminaire designed to be mounted on ceilings.



Technical data

Min Luminous Flux	1080lm@3000K
-------------------	--------------

Power Consumption	12W
-------------------	-----

Luminaire Efficacy	>90lm/w
--------------------	---------

Input Voltage	200-240V
---------------	----------

Power Factor	0.95
--------------	------

Ra	80
----	----

Colour Deviation	<6 steps
------------------	----------

Dimming Option	N/A
----------------	-----

Dimming Range	N/A
---------------	-----

Life Span	50,000hours
-----------	-------------

Ambient Temperature	-20°C~40°C
---------------------	------------

LED package
SMD2835

LED brand
Sinotron

Driver efficiency
85%

Driver brand
LiFud

Kavin 6"



Product description

6" direct emission luminaire designed to be mounted on ceilings.

Size
Φ175mm*175mm*35mm

Cut-out
/

Colour
White

Weight
446.5g

Mounting
Surface mounted

Ingress protection rating
IP20

Technical data

Min Luminous Flux	1620lm@3000K
Power Consumption	18W
Luminaire Efficacy	>90lm/w
Input Voltage	200-240V
Power Factor	0.95
Ra	80
Colour Deviation	<6 steps
Dimming Option	N/A
Dimming Range	N/A
Life Span	50,000hours
Ambient Temperature	-20°C~40°C



LED package
SMD2835

LED brand
Sinotron

Driver efficiency
85%

Driver brand
LiFud

Kavin 8"



Size
Φ225mm*225mm*35mm

Cut-out
/

Colour
White

Weight
655.5g

Mounting
Surface mounted

Ingress protection rating
IP20

Technical data

Min Luminous Flux	2250lm@3000K
Power Consumption	25W
Luminaire Efficacy	>90lm/w
Input Voltage	200-240V
Power Factor	0.95
Ra	80
Colour Deviation	<6 steps
Dimming Option	N/A
Dimming Range	N/A
Life Span	50,000hours
Ambient Temperature	-20°C~40°C

Product description

8" direct emission luminaire designed to be mounted on ceilings.



LED package
SMD2835

LED brand
Sinotron

Driver efficiency
85%

Driver brand
LiFud

TRACKLIGHT





Product description

Φ50mm beam angle adjustable luminary designed to be installed on 3 circuit track systems.



LED package
COB

LED brand
Luminus

Driver efficiency
85%

Driver brand
Tridonic

Thousand

Size
Φ50mm*170mm

Tilt
90°

Rotation
350°

Colour
Black

Mounting
Track system

Ingress protection rating
IP20

Technical data

Min Luminous Flux	900lm
Power Consumption	15W
Driver Built-in	Yes
Input Voltage	200-240V
Power Factor	0.93
Ra	90
Colour Deviation	<3 steps
Dimming Option	Upon request
Dimming Range	N/A
Life Span	50,000hours
Ambient Temperature	-20°C~40°C



William

Size
Φ100mm*120mm

Tilt
300°

Rotation
350°

Colour
Black / White / Gray

Mounting
Track system

Ingress protection rating
IP20



Product description

Φ100mm track luminary designed to be installed on 3 circuit track systems.



Technical data

Min Luminous Flux	1200lm
Power Consumption	20W
Driver Built-in	No
Input Voltage	200-240V
Power Factor	0.93
Ra	90
Colour Deviation	<3 steps
Dimming Option	Upon request
Dimming Range	N/A
Life Span	50,000hours
Ambient Temperature	-20°C~40°C

LED package
COB

LED brand
Luminus

Driver efficiency
85%

Driver brand
Tridonic



Wyatt

Size
Φ100mm*130mm

Tilt
300°

Rotation
350°

Colour
Black / White / Gray

Mounting
Track system

Ingress protection rating
IP20



Product description

Φ100mm track luminary designed to be installed on 3 circuit track systems.



Technical data

Min Luminous Flux	1500lm
Power Consumption	25W
Driver Built-in	No
Input Voltage	200-240V
Power Factor	0.93
Ra	90
Colour Deviation	<3 steps
Dimming Option	Upon request
Dimming Range	N/A
Life Span	50,000hours
Ambient Temperature	-20°C~40°C

LED package
COB

LED brand
Luminus

Driver efficiency
85%

Driver brand
Tridonic

Accessory



Four-Pin
Shaver



Theo

Size
115mm*100mm

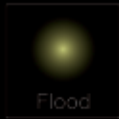
Tilt
300°

Rotation
350°

Colour
Black / White / Gray

Mounting
Track system

Ingress protection rating
IP20



Product description
115*100mm track luminary
designed to be installed on
3 circuit track systems.



Technical data

Min Luminous Flux	1000lm
Power Consumption	20W
Driver Built-in	No
Input Voltage	200-240V
Power Factor	0.93
Ra	90
Colour Deviation	<3 steps
Dimming Option	Upon request
Dimming Range	N/A
Life Span	50,000hours
Ambient Temperature	-20°C~40°C

LED package
COB

LED brand
Luminus

Driver efficiency
85%

Driver brand
Tridonic



Thorn

Size
115mm*100mm

Tilt
300°

Rotation
350°

Colour
Black / White / Gray

Mounting
Track system

Ingress protection rating
IP20



Product description
115*100mm track luminary
designed to be installed on
3 circuit track systems.



Technical data

Min Luminous Flux	1200lm
Power Consumption	20W
Driver Built-in	No
Input Voltage	200-240V
Power Factor	0.93
Ra	90
Colour Deviation	<3 steps
Dimming Option	Upon request
Dimming Range	N/A
Life Span	50,000hours
Ambient Temperature	-20°C~40°C

LED package
COB

LED brand
Luminus

Driver efficiency
85%

Driver brand
Tridonic



Stanley

Size
Φ130mm*60mm

Tilt
300°

Rotation
350°

Colour
Black / White / Gray

Mounting
Track system

Ingress protection rating
IP20



Product description
Φ130mm track luminary designed to be installed on 3 circuit track systems.



Technical data

Min Luminous Flux	1800lm
Power Consumption	30W
Driver Built-in	No
Input Voltage	200-240V
Power Factor	0.93
Ra	90
Colour Deviation	<3 steps
Dimming Option	Upon request
Dimming Range	N/A
Life Span	50,000hours
Ambient Temperature	-20°C~40°C

LED package
COB

LED brand
Luminus

Driver efficiency
85%

Driver brand
Tridonic





Rico

Size
Φ100mm*180mm

Tilt
300°

Rotation
350°

Colour
Black / White / Gray

Mounting
Track system

Ingress protection rating
IP20



Product description

Φ100mm track luminary designed to be installed on 3 circuit track systems.



Technical data

Min Luminous Flux	1500lm
Power Consumption	25W
Driver Built-in	No
Input Voltage	200-240V
Power Factor	0.93
Ra	90
Colour Deviation	<3 steps
Dimming Option	Upon request
Dimming Range	N/A
Life Span	50,000hours
Ambient Temperature	-20°C~40°C

LED package
COB

LED brand
Luminus

Driver efficiency
85%

Driver brand
Tridonic



Don

Size
Φ100mm*140mm

Tilt
90°

Rotation
350°

Colour
Black / White / Gray

Mounting
Track system

Ingress protection rating
IP20



Product description

Φ100mm track luminary designed to be installed on 3 circuit track systems.



Technical data

Min Luminous Flux	1200lm
Power Consumption	25W
Driver Built-in	Yes / No (Optional)
Input Voltage	200-240V
Power Factor	0.93
Ra	90
Colour Deviation	<3 steps
Dimming Option	Upon request
Dimming Range	N/A
Life Span	50,000hours
Ambient Temperature	-20°C~40°C

LED package
COB

LED brand
Luminus

Driver efficiency
85%

Driver brand
Tridonic



Davis

Size
Φ100mm*135mm

Tilt
90°

Rotation
350°

Colour
Black / White / Gray

Mounting
Track system

Ingress protection rating
IP20



Spotlight

Product description

Φ100mm track luminary designed to be installed on 3 circuit track systems.



Technical data

Min Luminous Flux	1500lm
Power Consumption	30W
Driver Built-in	No
Input Voltage	200-240V
Power Factor	0.93
Ra	90
Colour Deviation	<3 steps
Dimming Option	Upon request
Dimming Range	N/A
Life Span	50,000hours
Ambient Temperature	-20°C~40°C

LED package
COB

LED brand
Luminus

Driver efficiency
85%

Driver brand
Tridonic

Accessory



Honeycomb
Louver



Projector

Size
Φ100mm*210mm

Tilt
90°

Rotation
350°

Colour
Black / White / Gray

Mounting
Track system

Ingress protection rating
IP20



Narrow

Product description

Φ100mm track luminary designed to be installed on 3 circuit track systems.



Technical data

Min Luminous Flux	1500lm
Power Consumption	25W
Driver Built-in	Yes / No (Optional)
Input Voltage	200-240V
Power Factor	0.93
Ra	90
Colour Deviation	<3 steps
Dimming Option	Upon request
Dimming Range	N/A
Life Span	50,000hours
Ambient Temperature	-20°C~40°C

LED package
COB

LED brand
Luminus

Driver efficiency
85%

Driver brand
Tridonic



Camera

Size
Φ100mm*180mm

Tilt
90°

Rotation
350°

Colour
Black / White / Gray

Mounting
Track system

Ingress protection rating
IP20



Spotlight

Product description

Φ100mm track luminary designed to be installed on 3 circuit track systems.



Technical data

Min Luminous Flux	1500lm
Power Consumption	30W
Driver Built-in	No
Input Voltage	200-240V
Power Factor	0.93
Ra	90
Colour Deviation	<3 steps
Dimming Option	Upon request
Dimming Range	N/A
Life Span	50,000hours
Ambient Temperature	-20°C~40°C

LED package
COB

LED brand
Luminus

Driver efficiency
85%

Driver brand
Tridonic

Accessory



Honeycomb
Louver





HIGHBAY

Darson Ring



Size
Φ290mm*170mm / Φ340mm*180mm / Φ400mm*195mm

Tilt
180° (Bracket Installation)

Weight
2.3kg / 3.2kg / 4.0kg

Colour
Black / White

Mounting
Hanging / Bracket

Ingress protection rating
IP65

Product description

Heavy duty aluminum high bay designed to be installed at 8 - 15 meters height.

Technical data

Min Luminous Flux	11000lm / 16500lm / 22000lm
Power Consumption	100W / 150W / 200W
Luminary Efficacy	110lm/w
Input Voltage	200-240V
Power Factor	0.98
Ra	80
Colour Deviation	<6 steps
Dimming Option	Upon request
Sensor	Upon request
Life Span	50,000hours
Ambient Temperature	-20°C~40°C



LED package
SMD 3030

LED brand
N/A

Driver efficiency
90%

Driver brand
MOSO

Variations



Darson Bracket R



Darson Bracket S



Darson Hook

By pushing the limits again and again
for over 4 years
the 3rd generation KINGKONG delivers us

extraordinary cooling mechanism.



Kong

Size
Φ280mm*120mm

Tilt
N/A

Weight
2.5kg

Colour
Black

Mounting
Hanging

Ingress protection rating
IP65

Technical data

Min Luminous Flux 18000lm

Power Consumption 150W

Luminary Efficacy 120lm/w

Input Voltage 200-240V

Power Factor 0.95

Ra 80

Colour Deviation <6 steps

Dimming Option Upon request

Sensor Upon request

Life Span 50,000hours

Ambient Temperature -20°C~40°C



Product description

Heavy duty aluminum high bay designed to be installed at 8 - 15 meters height.



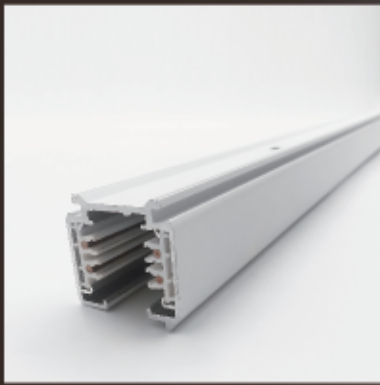
LED package
SMD 5050

LED brand
N/A

Driver efficiency
90%

Driver brand
Yaltan

ACCESSORIES

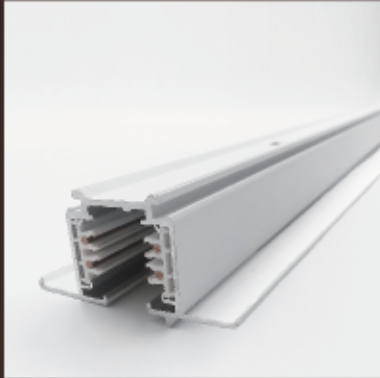


Track D

Mounting
Surface-mounted

Length
1m / 2m / 3m

Colour
Black / White / Gray



Track R

Mounting
Recessed

Length
1m / 2m / 3m

Colour
Black / White / Gray



Power Supply and Connectors

Power Supply
Tri-circuit

Connector Type
T shape / Cross / Linear / Cardan

Colour
Black / White / Gray



Smart Hanging Kit for Track D

Mounting
Direct

Colour
Black / White / Gray

More Accessories

For drawings and installation instructions of our track system, please contact our sales person for more information.

**More
Accessories**

Universal Dimmer

Size
45.6mm*45.6mm*13mm

Controller Type
Triac

Weight
N/A

Colour
White



Product description

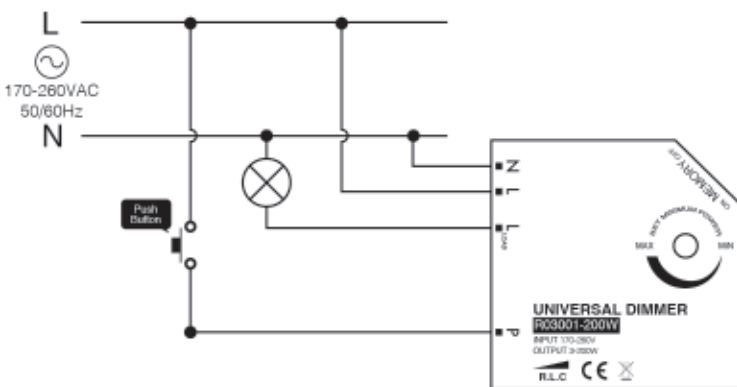
Universal push-dimmer with an output range from 3W to 200W.

Technical data

	Typical	Min	Max
Stand-by Power Consumption	0W	-	-
Power Consumption	1.4W	1.1W	2.5W
Input Voltage	230V	170V	260V
Input Current	-	-	1.2A
Power Factor	0.9	-	0.99
Frequency	50/60Hz		
Output Power	-	3W	200W
Dimming Range	-	1%	95%
Life Span	50,000hours		
Switching Cycle	30000times		

Wiring Instruction

One push button in one loop.



Two or more push buttons in one loop.

